

2002 ANNUAL REPORT

LAFAYETTE COUNTY HEALTH DEPARTMENT

729 CLAY STREET
DARLINGTON, WI 53530
PHONE: 608-776-4895
FAX: 608-776-4885

DIRECTOR / HEALTH OFFICER: Debbie Siegenthaler R.N., B.S.N.
ASSISTANT DIRECTOR/HOME CARE SUPERVISOR: Jane O' Brien R.N.

GOVERNING BODY: LAFAYETTE COUNTY BOARD OF HEALTH

Chairman – Henry Korn
J. Kenneth Taylor
John Alexander
George Williams
Alan Kremer
Michelle Hauser
Juanita Burke
Mary Skattum

MEDICAL ADVISOR: Lori Neumann, M.D.

PROFESSIONAL ADVISORY COMMITTEE:

Jane O' Brien R.N. – Chair, HC Supervisor – Health Dept.
Debbie Siegenthaler R.N., B.S.N., Director – Health Dept.
Sue Burke, Registered Physical Therapist
Michelle Carver R.N. DON, Lafayette Manor
Lori Neumann M.D., Medical Associates
Carol Benson, Director – Commission on Aging
Susan Wiegel, Social Worker, LCHS
Michael Parks, Registered Speech Therapist

2002 HIGHLIGHTS

- The Health Department had turnover again in its Public Health staff. Due to a resignation, Lynn Howery was hired as a PHN in 2002.
- Statistically, the Home Care Program has had its numbers remain much the same with total number of admissions at 107 for 2002 (2001 admissions equaled 100). Total number of visits was 3631 in 2001, and 3149 in 2002. The Balanced Budget Act of 1997 continues to have an impact on the Home Care Program. The prospective pay system, establishment of stricter service guidelines, and imposed increases in paperwork continue to be challenging. Revenues, however, are rebounding.
- The Hospice program continues to be a very worthwhile, growing program. In 2002, the number of new referrals went from 28 in 2001 to 39 in 2002. The number of patients admitted to the Hospice program increased from 20 in 2001 to 24 in 2002. Kristie remained busy with patient visits. In 2002, 439 visits were made which contrasts with 273 visits made in 2001. Donations to the Hospice Program remain steady. \$ 6300 was received in donations in 2001, similar to \$ 5928 received in 2002.
- As we know, September 11, 2001 changed our world forever. Bioterrorism preparedness remains at the forefront of Public Health. Much time and energy was spent dealing with this issue again in 2002. The Southwest PH Preparedness and Response Consortium was formed with Grant, Iowa, Lafayette, Richland, Vernon and Crawford Counties. Much training and planning was accomplished.
- The fourth annual Rural Safety Day for fifth graders in the County was another great success. All schools (except Pec school) participated and had a great, fun-filled day of learning. Many community partners contribute to the success of this event..... We salute them!
- West Nile was a big concern in 2002. Lafayette County had

another successful Tire Collection with sites in South Wayne, Blanchardville, and Darlington. 109.83 tons were collected with a net profit to the county of \$1162.95

- Lafayette County Health Department continued its tobacco prevention efforts through grant funds to aid efforts of the Lafayette County Tobacco-Free Coalition.
- With anticipation of HIPAA (Health Insurance Portability and Accountability Act), the Health Department spent much time planning for its implementation.

MISSION STATEMENT

LAFAYETTE COUNTY HEALTH DEPARTMENT

The mission of the Lafayette County Health Department is to promote optimal physical and emotional health for all county residents

- By promoting community education toward healthy lifestyles and,
- By protecting communities, families, and individuals from communicable disease and known and potential environmental health hazards that impact on human health and,
- By preventing and dealing with the effects of disabilities, chronic, acute and terminal illnesses on individuals and families, and assisting them

to reach their highest level of independence and,

- By collaborating with all health care and related providers to reach everyone and,
- By providing information to the Wisconsin Public Health Data Collection System for identification of priority health concerns for program development.

LAFAYETTE COUNTY HEALTH DEPARTMENT 2002 GOALS

- 1) CONTINUE OUR GOAL TO INCREASE AGENCY VISIBILITY AND COMMUNITY AWARENESS OF SERVICES. CONTINUE TO DISSEMINATE AGENCY NEWSLETTER.**
- 2) CONTINUE STAFF DEVELOPMENT:**
 - a. Increase staff knowledge regarding Board of Health Process, and staff knowledge of the County union contract/personnel policy.
 - b. Increase Board Member knowledge regarding programs and specific job duties.
- 3) CONTINUE THE '99, 2000 AND 2001 GOAL OF ATTEMPTING TO DECREASE FARM-RELATED DEATH AND INJURY THROUGH HOLDING THE 4TH ANNUAL RURAL SAFETY DAY FOR LAFAYETTE COUNTY 5TH GRADERS.**
- 4) CONTINUE TO EVALUATE THE 2000 AND 2001 GOAL OF SAFE SHARPS DISPOSAL IN LAFAYETTE COUNTY WHICH WAS ADDRESSED THROUGH A COLLABORATIVE EFFORT. The goal was to educate and inform residents on safe disposal of sharps.**

- 5) RESEARCH THE FEASIBILITY OF IMPLEMENTING A CAR SAFETY SEAT PROGRAM IN LAFAYETTE COUNTY IN COOPERATION WITH MEMORIAL HOSPITAL OF LAFAYETTE COUNTY.

PUBLIC HEALTH PROGRAM SERVICE REPORT

2002

	<u>2000</u>	<u>2001</u>	<u>2002</u>
Public Health Home Visits	81	83	189
Services Provided at Community Clinics	6885	5288	4926
Healthcheck Clinics - # Children	46	38	64
Lead Screening Clinics - # Children	<u>128</u>	<u>187</u>	<u>213</u>
<i>Clinic Totals</i>	6748	7140	5392

Community Health Day Clinic Contacts

<u>Location</u>	<u>2000</u>	<u>2001</u>	<u>2002</u>
Argyle	143	152	153
Belmont	122	127	136
Benton	147	85	64
Blanchardville	16	31	40
Darlington	89	67	71
Shullsburg	180	168	152
South Wayne	55	34	44
Woodford	<u>36</u>	<u>51</u>	<u>52</u>
	788	715	712

*Also had 1715 walk-ins from all county communities at Agency office requesting services.
(1805 in 2001)*

IMMUNIZATION CLINICS

	<u>2000</u>	<u>2001</u>	<u>2002</u>
Total Vaccines Given	3790	3894	3769
# Individuals Served	3108	2516	3266

**DTP/aP 437; HepB 639; HepB-Hib 219; Hib 58; MMR 181;
Pneumo-Poly 44; Pneumococcal 81; Polio 355; Td 89;
Varicella 90; Flu Vaccine 1257; and TB Skin 319.
*Total Given - 3769***

ENVIRONMENTAL HEALTH

2002

<u>Environmental Hazards</u>	<u># Investigations</u>
Air Quality Problems	6
Lead Hazards	14
Water	1
Radiation (Radon Kits)	50

<u>Public Health Nuisances</u>	<u># Investigations</u>
Housing	38
Rabies Control	40
Sewage	0
Solid Waste	0
Rodents	2
Water (Kits)	1

Water Quality 105

Total Environmental Problems 256

<u>COMMUNICABLE DISEASE FOLLOW-UP</u>	<u>2000</u>	<u>2001</u>	<u>2002</u>
Sexually Transmitted Diseases (<i>Chlamydia 11; Gonorrhea 1</i>)	9	11	12
Hepatitis A	0	1	0
Hepatitis B	0	1	1
Hepatitis C	2	0	2
Foodborne/Waterborne Illnesses	14	22	21

(Ecoli 2; Salmonella 3; Giardia 4;
Camplobacter 5, and Crypto 7)

AIDS	Less than 5		
Strep B (Wound Bacterial)	0	0	1
Active TB Cases	0	0	0
Total TB Clients (Unduplicated)	3	4	0
TB Related Contacts - Positive Skin Tests	36	49	0
Herpes Encephalitis	0	0	1
Legionella (1 Index Case; 20 Contacts)	1	0	21
Pertussis (1 Suspect Case; 2 Contacts)	0	0/6	1
Streptococcal Meningitis	0	0	1
Non/Bacterial Meningio Encephalitis	0	0	1
Yersiniosis	0	0	1
Lyme Disease	0	0	1

The Wisconsin Well Woman Program (WWWP)

2002 - # Contacts - 33

2002 Farm Safety Program/Lafayette County Rural Safety Day (5th Graders)

230 Children Educated
39 Presenters Involved
50 Volunteers

School Health Services

Total School Population - 3818
All 7 District Contracts/Services
Total Revenue - \$ 76,221

MCH Child Health Grant

New Moms/Baby Contacts - 90
Revenue \$10,922

<u>Healthcheck</u>	<u>2000</u>	<u>2001</u>	<u>2002</u>
# Clinics	14	12	12
# Outreached	463	404	581
Revenue	\$2941	\$2398	\$3732

<u>COP Assessments</u>	<u>2000</u>	<u>2001</u>	<u>2002</u>
# Clients	37	33	42
Revenue	\$4041	\$4698	\$5186

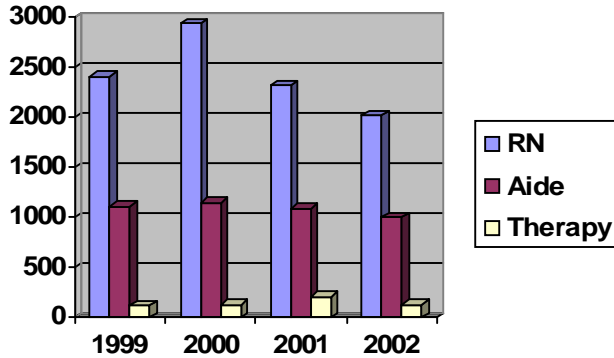
<u>Foot Care</u>	<u>2000</u>	<u>2001</u>	<u>2002</u>
# Clients	321	319	316
Revenue	\$1875	\$1366	\$2115

LAFAYETTE COUNTY HOME CARE SERVICE REPORT

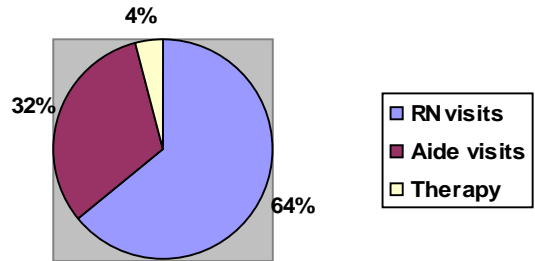
COMPARING LAST FOUR YEARS

	<u>1999</u>	<u>2000</u>	<u>2001</u>	<u>2002</u>
Admissions	113	100	100	107
Discharges	102	114	101	109
Total Visits	3650	4222	3631	3149
RN Visits	2410	2939	2321	2017
Aide Visits	1115	1149	1092	998
P.T. Visits	110	132	182	97
S.T. Visits	8	0	0	0
O.T. Visits	7	2	36	37

Home Care visits (per discipline)

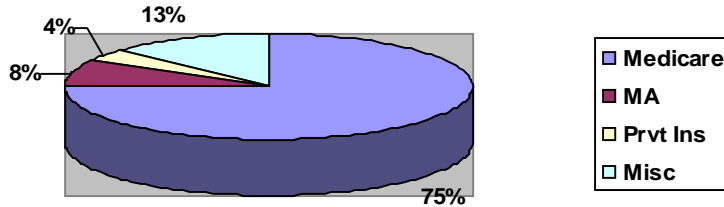


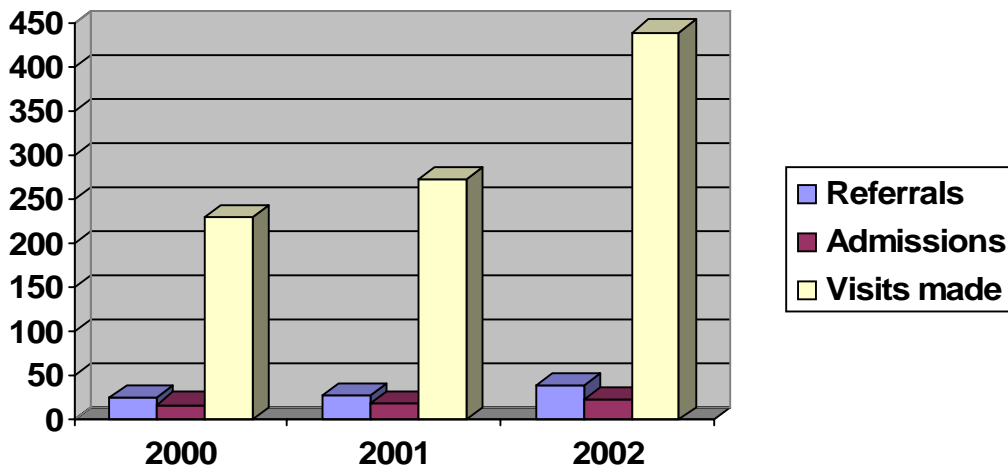
Home Care Visit Type: 2002



HOME CARE REVENUE SOURCES 2002

Medicare	\$ 251,590	75%
Medical Assistance	26,897	8%
Private Insurance	13,686	4%
MA/PC (H.S.)	10,124	3%
Self Pay Patients	2,030	1%
Miscellaneous Revenue	28,248	9%



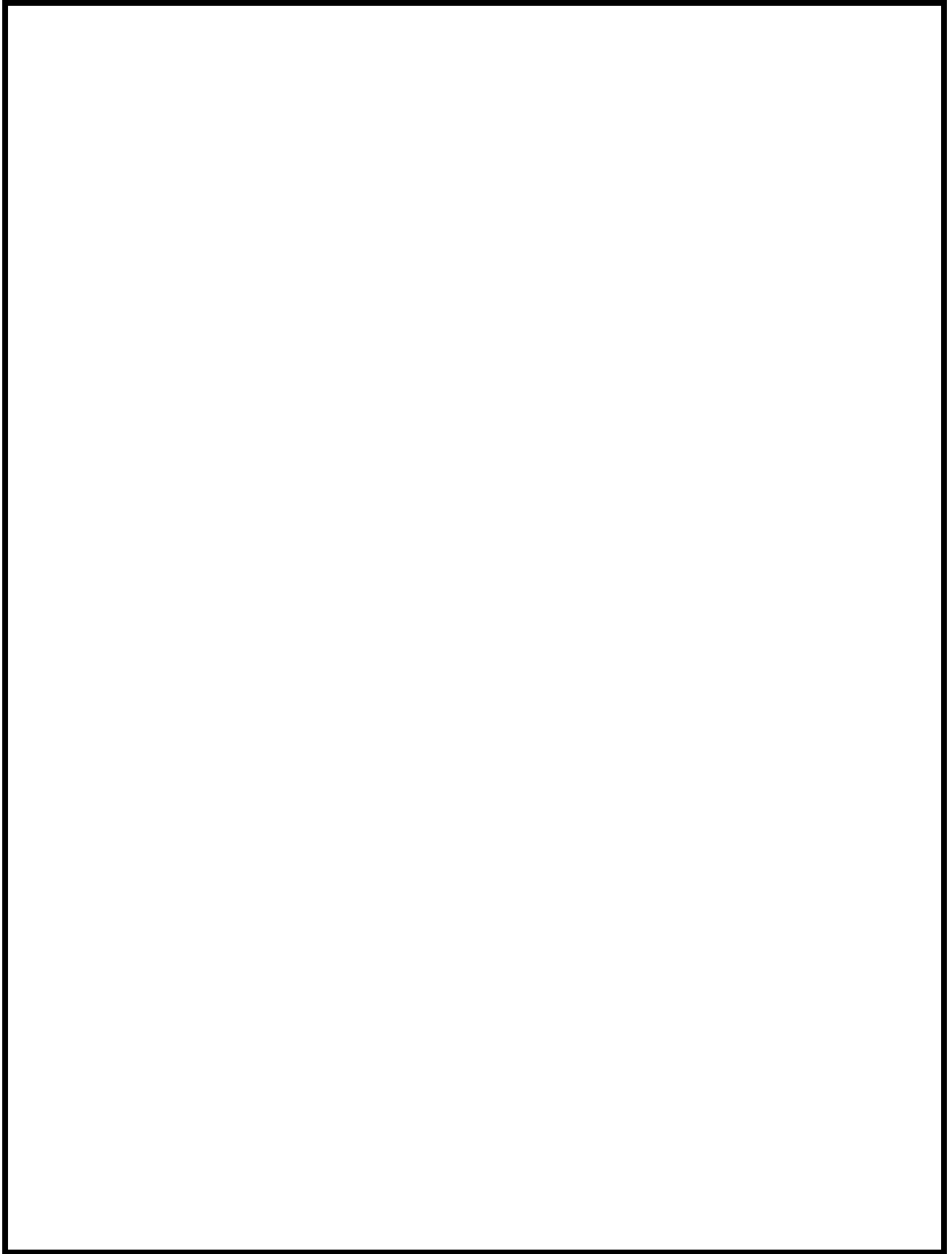


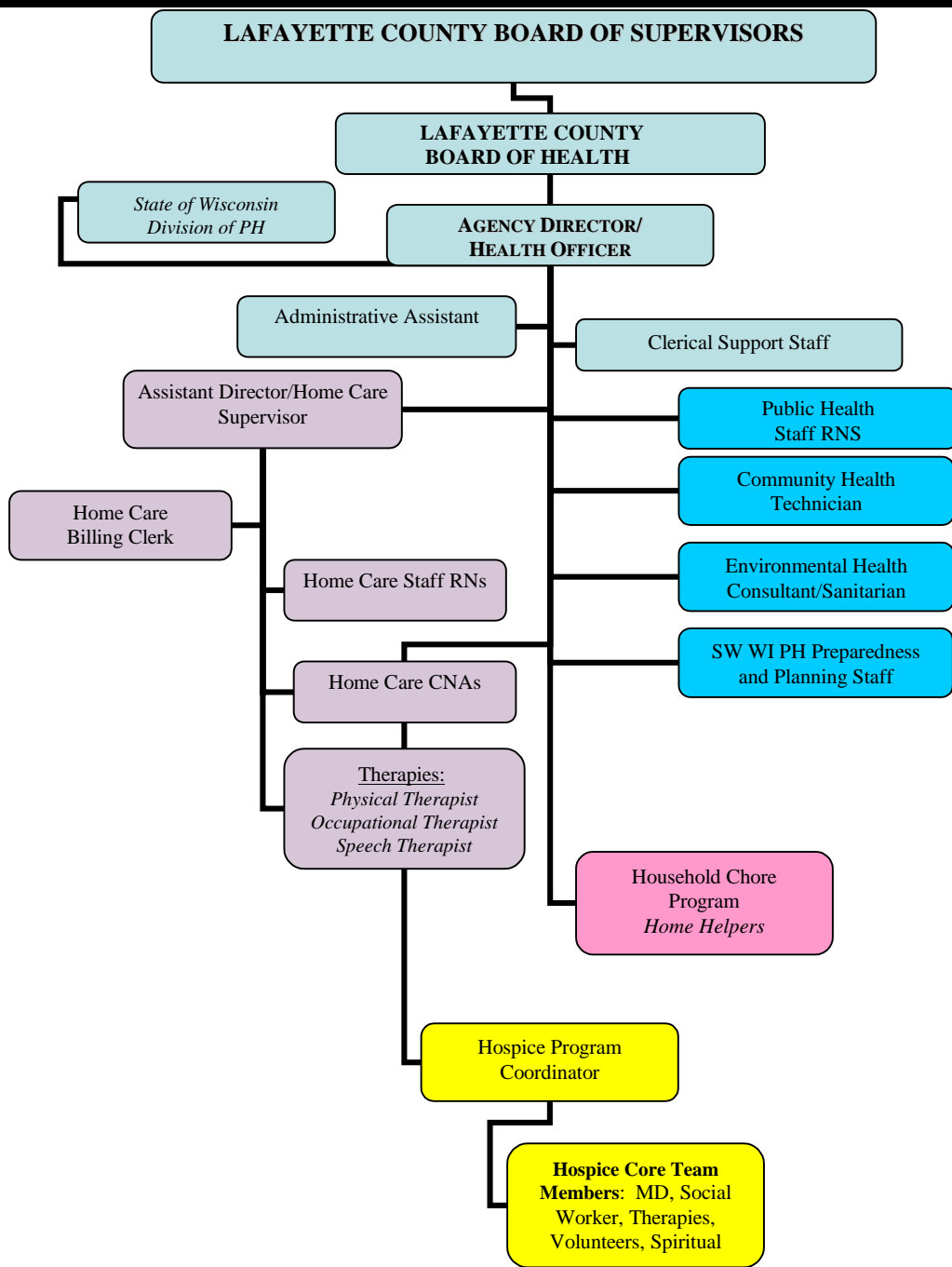
FISCAL PICTURE IN HOSPICE

	<u>2000</u>	<u>2001</u>	<u>2002</u>
Program Cost	\$60,339	\$92,410	\$137,008
Patient Care Reimbursement	\$58,214	\$45,358	83,608
Donations/Misc. Revenue	\$ 5,161	\$ 6,300	5,928

2002 Account Balance (- \$47,472)

LAFAYETTE COUNTY HEALTH DEPARTMENT ORGANIZATIONAL CHART





2002 LAFAYETTE COUNTY HEALTH DEPARTMENT STAFF

DIRECTOR/HEALTH OFFICER

Debbie Siegenthaler, R.N., BSN

ASSISTANT DIRECTOR/HOME CARE SUPERVISOR

Jane O'Brien, R.N.

ASSISTANT DIRECTOR/HOSPICE CO-ORDINATOR

Kristie Lueck, R.N.

PUBLIC HEALTH NURSING STAFF

Lee Gill, R.N.

Farah Mellenberger, R.N., BSN

Sue Hefel, R.N., BSN

Tracey Anderson, R.N., BSN

Lynn Howery, R.N., BSN

Mary Jo Finkenbinder, R.N. (Personal Care Program)

HOME CARE NURSING STAFF

Joanne Huntington, R.N.

Sonja Wiegel, R.N.

Mary Ellen Jacobson, R.N.

REGISTERED PHYSICAL THERAPIST

Susan Burke, Licensed P.T.

Marcy Christensen, Licensed P.T.

Melissa Nickels, P.T.

REGISTERED SPEECH THERAPIST

Michael Parks, Licensed S.T.

OCCUPATIONAL THERAPIST

Barb Ritchie, Licensed O.T.

SOCIAL WORKER

Julie Shoemaker

REGISTERED DIETITIAN

Colleen Keen

HOME HEALTH AIDES

Colleen Leinberger, CNA

Leore Peterson, CNA

Teresa Robelia, CNA

HOME HELPER STAFF

Vicky Reichling

Trisha Rowe

Nancy Winslow

OFFICE STAFF

Jeri Byrne, Admin. Asst.

Janice Ruf, Home Care Billing Clerk/CNA

Cathy Paulson, Clerical/CNA/HH

Diane Douglas, PH Technician/Clerical/CNA

WISCONSIN WOMEN'S CANCER CONTROL PROGRAM

Penny Clary, Grant Coordinator

ENVIRONMENTAL HEALTH CONSULTANT

Jim Udelhoven, Registered Sanitarian

Troy Moris, Environmental Health Consultant

**ENDING YEAR-END BALANCES
FOR
HOME CARE PROGRAM**

(LAST 10-YEARS)

1992	\$	34,216.01
1993		76,759.04
1994		43,877.43
1995		29,756.90
1996		30,642.43
1997		18,845.62 (Retained for New Bldg. Expenses)
1998		(67,549.47)
1999		(20,062.61)
2000		21,862
2001		(28,889)
2002		41,921