

LAFAYETTE COUNTY HEALTH DEPARTMENT

2006

ANNUAL REPORT

729 CLAY STREET
DARLINGTON, WI 53530
PHONE: 608-776-4895
FAX: 608-776-4885

DIRECTOR/HEALTH OFFICER: Debbie Siegenthaler RN, MSN
ASSISTANT DIRECTOR/HOME CARE SUPERVISOR: Jane O' Brien RN,
ASSISTANT DIRECTOR/HOME CARE&HOSPICE SUPERVISOR (7/06): Kristie Lueck RN,
BSN

LAFAYETTE COUNTY BOARD OF HEALTH

Chairman – Kenny Taylor
John Alexander
David Hammer
Dean Thoreson
Michelle Hauser
Juanita Burke
Mary Skattum

MEDICAL ADVISOR: Dr. Lori Neumann, M.D.

PROFESSIONAL ADVISORY COMMITTEE:

Jane O' Brien R.N. - Chair, HC Supervisor - Health Dept.
Debbie Siegenthaler RN, MSN, Director - Health Dept.
Sue Burke, Registered Physical Therapist
Director of Nursing, Lafayette Manor
Lori Neumann M.D., Medical Associates
Carol Benson, Director – Aging Resource Center
Social Worker, Lafayette County Human Services
Michael Parks, Registered Speech Therapist

2006 HIGHLIGHTS

- ◀ The Home Care Program had a major change in 2006 as long-time and treasured Assistant Director/Home Care Supervisor Jane O'Brien retired after decades of service to Lafayette County. We miss Jane but feel very fortunate to have had Kristie Lueck assume the position. Statistically, the Home Care Program has had its numbers remain stable with total number of admissions at 117 for 2006 (2005 admissions = 119). Total number of visits was 2968 in 2005 and 2859 in 2006.
- ◀ The Hospice program saw changes as well due to Jane's retirement. Kristie stepped out of the role of Hospice Nurse to assume her new role. It was a challenge filling the nurse position. Finally in August we filled the position with Dawn Hardin but had to refill it again at year end due to Dawn's departure. We also had a Hospice State survey in 2006 which was very successful as we received very few citations. In 2006, the number of new referrals was 35 (36 in 2005). The number of patients admitted to the Hospice program was 26 in 2006 (22 in 2005). We saw a decrease in patient visits, partly due to Hospice nurse staff recruitment challenges and other staff changes. In 2006, 393 visits were made which contrasts with 578 visits made in 2005. Donations to the Hospice Program continued to be steady. \$ 7,449 was received in donations in 2006, very similar to the \$ 7,311 received in 2005.
- ◀ 2006 was another very tough budget year for the our department as we sustained cuts again to our budget. Budget cuts are challenging when trying to maintain operations to serve people and control communicable diseases such as the mumps outbreak in Iowa that we dealt with here in SW WI. We also held another successful rural safety day in 2006 educating all county 4th and 5th graders – over 400 kids!
- ◀ The Community Health Needs Assessment process continued in 2006 with our ongoing involvement in the Lafayette County Aging Well/Living Well Coalition & the Lafayette County Community Suicide Intervention (CSI) Task force. Our participation in these two important coalitions to helps address the 3 priority areas in our Health Improvement Plan: 1) Health needs of the elderly, 2) Promotion of healthy lifestyle behaviors and 3) Improving access to care. In fact the health department was instrumental in securing a grant for the CSI task force to address suicide in our county. We also continue involvement in dental care access.
- ◀ As we all remember September 11, 2001 changed our world. Bioterrorism preparedness remains at the forefront of Public Health. Much time and energy was again spent in 2006 confronting the huge task of adequate planning & preparedness. The Southwest PH Preparedness and Response Consortium (Grant, Iowa, Lafayette, Richland, Vernon and Crawford Counties) continued work on preparedness objectives. Numerous tabletop & mass vaccination exercises were held designed to test readiness. We again had a functional mass flu clinic exercise in November. Another focus was continued training of staff at the Health Department as well as our readiness partners and cross state border planning. Incident command is an ongoing training focus. A school disease/syndromic surveillance pilot project was carried out in 2 Lafayette County schools.
- ◀ Involvement in Family Care (Long Term Pilot Expansion) has been an ongoing project for us. Being at the table engaged in discussions and understanding of this state initiative and its implications is important to our department.

LAFAYETTE COUNTY HEALTH DEPARTMENT **MISSION STATEMENT**

The mission of the Lafayette County Health Department is to promote optimal physical and emotional health for all county residents

- ~ **By promoting community education toward healthy lifestyles and,**
- ~ **By protecting communities, families, and individuals from communicable disease and known and potential environmental health hazards that impact on human health and,**
- ~ **By preventing and dealing with the effects of disabilities, chronic, acute and terminal illnesses on individuals and families, and assisting them to reach their highest level of independence and,**
- ~ **By collaborating with all health care and related providers to reach everyone and,**
- ~ **By providing information to the Wisconsin Public Health Data Collection System for identification of priority health concerns for program development.**

LAFAYETTE COUNTY HEALTH DEPARTMENT **2006 GOALS**

1. CONTINUE ACTION PLAN TO INCREASE AGENCY VISIBILITY AND COMMUNITY AWARENESS OF SERVICES. CONTINUE TO DISSEMINATE AGENCY NEWSLETTER.
2. CONTINUE STAFF DEVELOPMENT:
 - a. Increase staff knowledge regarding Board of Health Process, and staff knowledge of the County union contract/personnel policy.
 - b. Increase Board Member knowledge regarding programs and specific job duties.
3. CONTINUE TO PARTICIPATE IN REGIONAL AND LOCAL BIOTERRORISM CONSORTIA. Implement necessary steps for Bioterrorism and public health preparedness; tabletop exercises, mass vaccination drills, training, testing written plans, etc.
4. ADDRESS AND SUPPORT HOSPICE PROGRAM NEEDS
5. CONTINUE TO SUPPORT AND ADDRESS THE PRIORITY COMMUNITY HEALTH NEEDS IDENTIFIED IN THE 2004 LAFAYETTE COUNTY HEALTH DEPARTMENT COMMUNITY HEALTH NEEDS ASSESSMENT.
Top Three Priorities identified: 1) Health Needs of the elderly
2) Healthy Lifestyle Promotion
3) Improving Access to Care
6. MAINTAIN CURRENT AGENCY PROGRAMMING AND INFRASTRUCTURE IN THE EXTREMELY TIGHT COUNTY BUDGET CLIMATE AS WELL AS THE PRECARIOUS WORLD TODAY (public health preparedness issues are as important as ever as well as the ever challenging general health care issues we face in the county, state and nation).

2006 PUBLIC HEALTH PROGRAM SERVICE REPORT

	<u>2004</u>	<u>2005</u>	<u>2006</u>
Public Health Home Visits	86	77	94
Services Provided at Community Clinics	736	4278	4287
Paternity Testing - # Tests	40	47	32
Lead Screening Clinics - # Children	<u>37</u>	<u>180</u>	<u>178</u>
<i>Clinic Totals</i>	3999	4582	4591

COMMUNITY HEALTH DAY CLINIC CONTACTS

<u>Location</u>	<u>2004</u>	<u>2005</u>	<u>2006</u>
Argyle	99	154	100
Belmont	91	93	75
Benton	73	66	51
Blanchardville	35	37	52
Darlington	22	28	36
Shullsburg	89	144	87
South Wayne	11	16	7
Gratiot	<u>10</u>	<u>9</u>	<u>3</u>
	719	591	411

*431 walk-ins from all county communities at Agency office (533 in 2005)

IMMUNIZATION CLINICS

	<u>2004</u>	<u>2005</u>	<u>2006</u>
Total Vaccines Given	2797	3503	3090
# Individuals Served	1784	1609	1750

DTP/aP 214; HepB 77; HepB-Hib 2; Hib 181; MMR 238; Pederix 185; Pneumo-Poly 28;
Pneumococcal 259; Polio 126; Td 178; Varicella 97; Flu 1152; Meningo 19; TB Skin 284;
Dt 3; HepA 9; Td Boostrix 17; Td Adacel 21 ***Total Given - 3090***

ENVIRONMENTAL HEALTH - 2006

<u>ENVIRONMENTAL HAZARDS</u>	<u># INVESTIGATIONS</u>	
	HOME VISITS	CONTACTS
Air Quality Problems	3	22
Lead Hazards	2	11
Water (3) (20 Beach)	2	16
Radiation (Radon Kits)	-	21 (given out)

<u>PUBLIC HEALTH NUISANCES</u>	<u># INVESTIGATIONS</u>	
	HOME VISITS	CONTACTS
Restaurant Issue	0	3
Housing	15	37
Rabies (43 Rabies Investigations)	5	65
Asbestos	3	14
Solid Waste	2	21
Animal	7	31
Hazardous	-	5
Sewage	-	2
<u>Water Quality</u> (51 Kits)	-	102

39 Home Visits – 347 Contacts

<u>COMMUNICABLE DISEASE FOLLOW-UP</u>	<u>2004</u>	<u>2005</u>	<u>2006</u>
Sexually Transmitted Diseases (<i>Chlamydia</i> 17; <i>Gonorrhea</i> 2; <i>Herpes</i> 1)	15	20	8
Hepatitis A	0	0	0
Hepatitis B	0	0	0
Hepatitis C	2	2	1
Foodborne/Waterborne Illnesses	40	18	19
<i>(Ecoli 1; Salmonella 5; Giardia 2; Camplobacter 5, and Crypto 6, Norovirus 0; Shigella 0)</i>			
AIDS	Less than 5		
Active TB (Tuberculosis)Cases	0	0	0
Total TB Clients (Unduplicated)	2	3	1
TB Related Contacts	18	8	12
Legionella	0	0	0
Pertussis	20	10	0
Mumps	0	0	7

Varicella	0	0	7
Lyme Disease	0	0	1
Lacrosse Encephalitis	1	0	0
Bacterial Meningitis	1	0	1
Viral Meningitis	2	1	0
Streptococcus Pneumoniae (Group A)	0	1	2
Streptococcus Pyogenes	0	0	0
Invasive Hemophilus Influenza	1	0	0
Dengue Fever	1	0	0
Strep Agal B	1	0	0
Strep Group B	<u>0</u>	<u>1</u>	<u>0</u>
	105	63	59

THE WISCONSIN WELL WOMAN PROGRAM (WWWP)

2005 # Contacts - 57

2006 # Contacts - 59

2006 FARM SAFETY PROGRAM/LAFAYETTE COUNTY RURAL SAFETY DAY
(4TH AND 5TH GRADERS) – 405 STUDENTS THE EVENT IS HELD EVERY OTHER YEAR
WILL BE HELD AGAIN IN 2008

SCHOOL HEALTH SERVICES

Total School Population - 3026
(6) District Contracts/Services
Total Revenue - \$ 41,624

MCH CHILD HEALTH GRANT

New Moms/Baby Contacts - 44
Grant Revenue \$10,103

COP ASSESSMENTS

	<u>2004</u>	<u>2005</u>	<u>2006</u>
# Clients	42	37	36
Revenue	\$1965	\$1350	\$1440

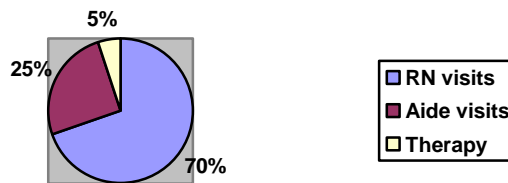
FOOT CARE

	<u>2004</u>	<u>2005</u>	<u>2006</u>
# Clients	316	324	276
Revenue	\$5064	\$5843	\$4893

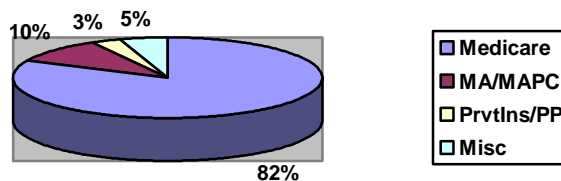
HOME CARE SERVICES

	<u>2003</u>	<u>2004</u>	<u>2005</u>	<u>2006</u>
Admissions	110	127	119	117
Discharges	112	118	127	109
Total Visits	2776	3000	2968	2859
RN Visit	1803	1899	1857	1992
Aide Visits	836	821	863	722
P.T. Visits	127	208	176	118
S.T. Visits	0	16	2	5
O.T. Visits	10	56	70	22

Home Care Visit Type: 2006



HOME CARE REVENUE SOURCES 2006



Medicare	\$ 281,682	82%
Medical Assistance	19,878	6%
Private Insurance	8,076	2%
MA/PC	13,292	4%
Self Pay Patients	5,163	1%
Misc. Revenue	15,672	5%

MEDICAL ASSISTANCE PERSONAL CARE PROGRAM

	<u>2004</u>	<u>2005</u>	<u>2006</u>		
# Clients	30	31	33	2006 Revenue - \$	19,879
RN Visits	182	199	217	2005 Revenue -	19,159
Aide Visits	457	558	673	2004 Revenue -	27,885

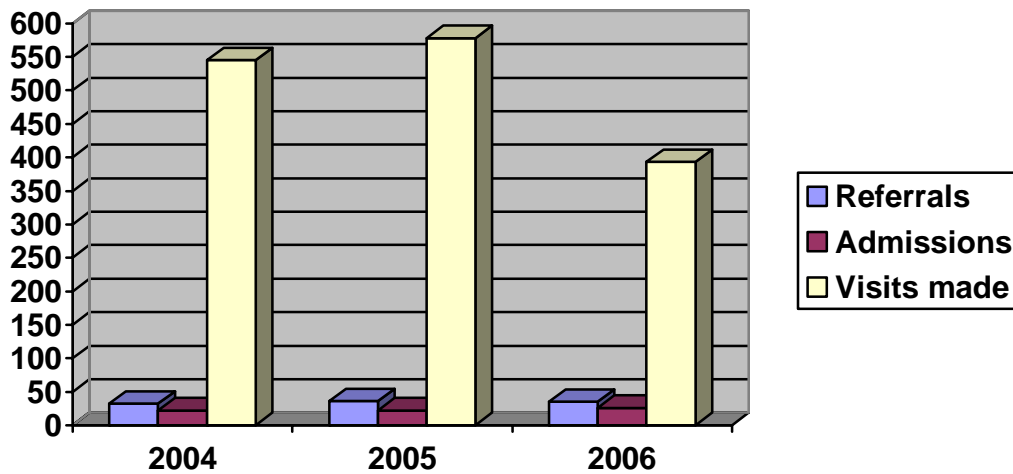
2006 County Allocation/Transfer	\$ 88,330
Home Care Program Revenues	343,763
Home Care Program Expenses	<u>469,282</u>
	(37,189)

AGING RESOURCE CENTER - PERSONAL CARE

	<u>2004</u>	<u>2005</u>	<u>2006</u>		<u>2004</u>	<u>2005</u>	<u>2006</u>
# Clients	13	11	16	RN Visits	62	42	73
# Visit	474	343	404	Aide Visits	412	301	331
Program Cost	\$ 14,595			Paid By Clients	\$ 5,638		
				Paid by COA	\$ 8,957		

HOSPICE

	<u>2004</u>	<u>2005</u>	<u>2006</u>
Referrals for Hospice Care	32	36	35
Admitted to Hospice Program	22	22	26
RN/Aide/PT/OT/ST Visits	545	578	393
Meetings of Core Team	26	26	29

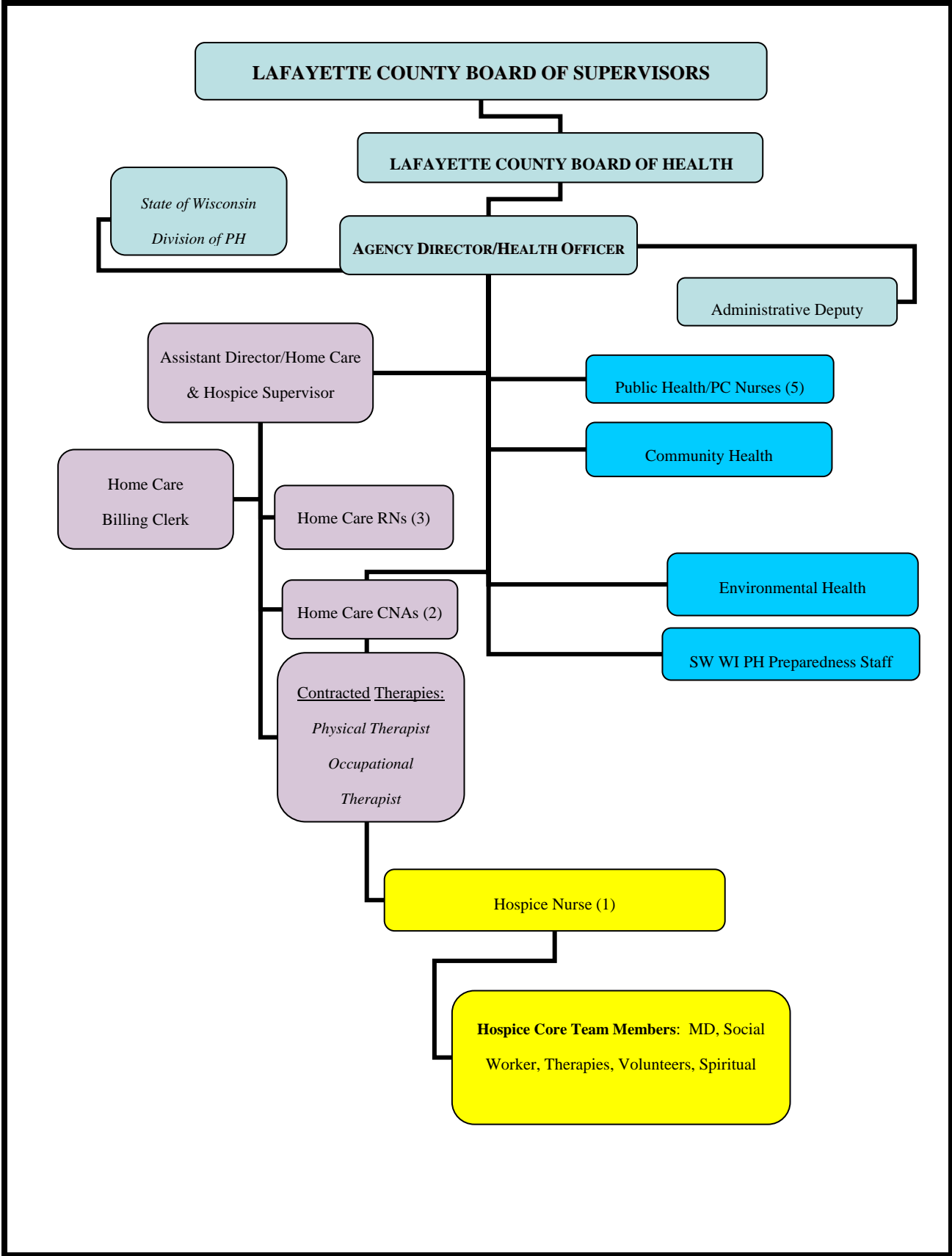


FISCAL PICTURE IN HOSPICE

	<u>2004</u>	<u>2005</u>	<u>2006</u>
Program Cost	\$156,002	\$207,599	\$129,888
Patient Care Reimbursement	\$146,739	\$232,506	\$ 76,835
Returned to General Fund		\$ 21,610	\$ (49,757)

HOSPICE DONATION ACCOUNT - 2006

2005 Carry Over Balance \$ 5,596
 Donations Recieved \$ 7,449
 Expenses Paid \$ 526
 2006 Carry Over Balance = \$ 12,519



2006 LAFAYETTE COUNTY HEALTH DEPARTMENT STAFF

DIRECTOR/HEALTH OFFICER

Debbie Siegenthaler RN, MSN

ASSISTANT DIRECTOR/HOME CARE SUPERVISOR

Jane O'Brien RN *retired June 2006

ASSISTANT DIRECTOR/HOSPICE COORDINATOR

Kristie Lueck RN, BSN *assumed position June 2006

PUBLIC HEALTH NURSING STAFF

Lee Gill RN

Farah Mellenberger RN, BSN

Sue Hefel RN, BSN

Lynn Howery RN, BSN

Mary Jo Finkenbinder RN (Personal Care Program)

HOME CARE NURSING STAFF

Joanne Huntington RN

Sonja Wiegel RN

Mary Ellen Jacobson RN

HOSPICE NURSE

Dawn Hardin RN

HOME HEALTH AIDES

Teresa Robelia, CNA

Erin Hastert, CN

OCCUPATIONAL THERAPIST (contracted)

Barb Ritchie, Licensed OT

OFFICE STAFF

Jeri Byrne, Admin. Deputy

Janice Ruf, Home Care Billing Clerk

Colleen Leinberger, PH Technician/Clerical/CNA

REGISTERED PHYSICAL THERAPIST (contracted)

Susan Burke, Licensed PT

Marcy Christensen, Licensed PT

Jodi Christopher, Licensed PT

Melissa Nickels, Licensed PT

ENVIRONMENTAL HEALTH CONSULTANT

Troy Moris, Registered Sanitarian

Environmental Health Consultant

REGISTERED SPEECH THERAPIST (contracted)

Michael Parks, Licensed ST

SOCIAL WORKER (contracted)

Halie Helfvogt

REGISTERED DIETITIAN (contracted)

Colleen Keen

