

LAFAYETTE COUNTY HEALTH DEPARTMENT

2005

ANNUAL REPORT

729 CLAY STREET
DARLINGTON, WI 53530
PHONE: 608-776-4895
FAX: 608-776-4885

DIRECTOR/HEALTH OFFICER: Debbie Siegenthaler RN, MSN
ASSISTANT DIRECTOR/HOME CARE SUPERVISOR: Jane O' Brien RN

LAFAYETTE COUNTY BOARD OF HEALTH

Chairman – George Williams
J. Kenneth Taylor
John Alexander
Verne Jackson
Michelle Hauser
Juanita Burke
Mary Skattum

MEDICAL ADVISOR: Dr. Lori Neumann, M.D.

PROFESSIONAL ADVISORY COMMITTEE:

Jane O' Brien R.N. - Chair, HC Supervisor - Health Dept.
Debbie Siegenthaler R.N., M.S.N., Director - Health Dept.
Sue Burke, Registered Physical Therapist
Michelle Carver R.N. DON, Lafayette Manor
Lori Neumann M.D., Medical Associates
Carol Benson, Director - Commission on Aging
Susan Wiegel, Social Worker, LCHS
Michael Parks, Registered Speech Therapist

2005 HIGHLIGHTS

- ◀ Statistically, the Home Care Program had its numbers remain much the same with total number of admissions at 119 for 2005 (2004 admissions equaled 127). Total number of visits was stable; 3000 in 2004 and 2968 in 2005. Revenues continued to rebound and do well (following the Balanced Budget Act of 1997).
- ◀ The Hospice program continued as a successful program. In 2005, the number of new referrals was 36 (32 in 2004). The number of patients admitted to the Hospice program was 22 in 2005 (22 in 2004). We remained busy with patient visits. In 2005, 578 visits were made which contrasts with 545 visits made in 2004. Donations to the Hospice Program continued successfully as well. \$ 7311 was received in donations in 2005, a slight decrease from the \$11,113 received in 2004. A separate account was established in 2005 for donations.
- ◀ 2005 was a tough budget year for the Health Department in that we experienced many changes to programs and staff. The Home Chore program lost a staff member due to budget cuts mid-year (Nancy Winslow) and had another staff reduction at year-end (Trisha Rowe) leaving one staff member remaining (Vicky Reichling). Effective January 1, 2006 the Home Chore program is now operated through the Aging Resource Center. Additionally, the Health Department went into 2006 reducing our budget by over \$ 81,000 and lost our clerical staff member Cathy Paulson. We miss all our former staff members☺
- ◀ The Community Health Needs Assessment process continued in 2005 with ongoing involvement in the Lafayette County Aging Well/Living Well Coalition & the Lafayette County Community Suicide Intervention (CSI) Task force. Our participation in these important coalitions helps address the 3 priority areas in our Health Improvement Plan: 1) Health needs of the elderly, 2) Promotion of healthy lifestyle behaviors and 3) Improving access to care.
- ◀ As we all remember, September 11, 2001 changed our world forever. Bioterrorism preparedness remains at the forefront of Public Health. Much time and energy was again spent in 2005 confronting the issue of adequate planning & preparedness. The Southwest PH Preparedness and Response Consortium (Grant, Iowa, Lafayette, Richland, Vernon and Crawford Counties) continues work on preparedness objectives. Numerous tabletop & mass vaccination exercises were held designed to test PH readiness. In fact, the Health Department conducted a functional exercise in the form of a mass flu clinic in November giving 400+ flu shots. Another focus was continued training of staff at the Health Department as well as our readiness partners.

LAFAYETTE COUNTY HEALTH DEPARTMENT **MISSION STATEMENT**

The mission of the Lafayette County Health Department is to promote optimal physical and emotional health for all county residents

- ~ **By promoting community education toward healthy lifestyles and,**
- ~ **By protecting communities, families, and individuals from communicable disease and known and potential environmental health hazards that impact on human health and,**
- ~ **By preventing and dealing with the effects of disabilities, chronic, acute and terminal illnesses on individuals and families, and assisting them to reach their highest level of independence and,**
- ~ **By collaborating with all health care and related providers to reach everyone and,**
- ~ **By providing information to the Wisconsin Public Health Data Collection System for identification of priority health concerns for program development.**

2005 AGENCY GOALS

- 1) CONTINUE ACTIVITIES TO INCREASE AGENCY VISIBILITY AND COMMUNITY AWARENESS OF SERVICES. CONTINUE TO DISSEMINATE AGENCY NEWSLETTER AND WEEKLY RADIO SPOTS.**
- 2) CONTINUE STAFF DEVELOPMENT:**
 - a. Increase staff knowledge re Board of Health Process & staff knowledge of the County union contract/personnel policy.
 - b. Increase Board Member knowledge regarding programs and specific job duties.
- 3) CONTINUE THE EVALUATION OF THE SAFE SHARPS DISPOSAL PROGRAM IN LAFAYETTE COUNTY.**
- 4) PARTICIPATE IN REGIONAL SW WI PUBLIC HEALTH PREPAREDNESS & RESPONSE CONSORTIUM AND LOCAL BIOTERRORISM TASK FORCE. IMPLEMENT NECESSARY STEPS FOR PUBLIC HEALTH PREPAREDNESS – tabletop exercises, mass vaccination drills, training, testing written plans, etc.**
- 5) ADDRESS AND SUPPORT HOSPICE PROGRAM NEEDS RELATED TO PROGRAM GROWTH.**
- 6) SUPPORT THE PRIORITY NEEDS IDENTIFIED IN THE 2004 LAFAYETTE COUNTY HEALTH DEPARTMENT NEEDS ASSESSMENT.**

Top Three Priorities identified:

 - 1) Health Needs of the elderly
 - 2) Healthy Lifestyle Promotion
 - 3) Improving Access to Care

2005 PUBLIC HEALTH PROGRAM SERVICE REPORT

	<u>2003</u>	<u>2004</u>	<u>2005</u>
Public Health Home Visits	116	86	77
Services Provided at Community Clinics	4782	3736	4278
Paternity Testing - # Tests	12	40	47
Lead Screening Clinics - # Children	<u>181</u>	<u>137</u>	<u>180</u>
<i>Clinic Totals</i>	<i>5091</i>	<i>3999</i>	<i>4582</i>

COMMUNITY HEALTH DAY CLINIC CONTACTS

<u>Location</u>	<u>2003</u>	<u>2004</u>	<u>2005</u>
Argyle	181	99	154
Belmont	116	91	93
Benton	51	73	66
Blanchardville	33	35	37
Darlington	127	22	28
Shullsburg	120	89	144
South Wayne	28	11	16
Gratiot	15	10	9
Woodford	<u>48</u>	<u>27</u>	<u>44</u>
	712	719	591

**533 walk-ins from all county communities at Agency office (814 in 2004)*

IMMUNIZATION CLINICS

	<u>2003</u>	<u>2004</u>	<u>2005</u>
Total Vaccines Given	3911	2797	3503
# Individuals Served	2587	1784	1609

**DTP/aP 155; HepB 103; HepB-Hib 44; Hib 223; MMR 179;
 Pediarix 226; Pneumo-Poly 25; Pneumococcal 299; Polio 90;
 Td 277; Varicella 109; Flu 1464; Meningo 3; TB Skin 346.**

Total Given - 3503

ENVIRONMENTAL HEALTH - 2005

ENVIRONMENTAL HAZARDS # INVESTIGATIONS

Air Quality Problems	6
Lead Hazards	2
Water (4) (20 Beach)	24
Radiation (Radon Kits)	53

PUBLIC HEALTH NUISANCES # INVESTIGATIONS

Restaurant Issue	2
Housing	9
Rabies Control	35
Asbestos	1
Solid Waste	4
Animal	2
<u>Water Quality</u> (36 Kits)	<u>72</u>

Total Environmental Problems 210 (306 in 2004)

<u>COMMUNICABLE DISEASE FOLLOW-UP</u>	<u>2003</u>	<u>2004</u>	<u>2005</u>
---------------------------------------	-------------	-------------	-------------

Sexually Transmitted Diseases	19	15	20
<i>(Chlamydia 17; Gonorrhea 2; Herpes 1)</i>			
Hepatitis A	1	0	0
Hepatitis B	0	0	0
Hepatitis C	3	2	2
Foodborne/Waterborne Illnesses	23	40	18
<i>(Ecoli 0; Salmonella 5; Giardia 1; Camplobacter 8, and Crypto 3, Norovirus 0; Shigella 0.</i>			
AIDS	Less than 5		
Active TB Cases	0	0	0
Total TB Clients (Unduplicated)	0	2	3
TB Related Contacts	0	18	8
Legionella	0	0	0
Pertussis	0	20	10
Streptococcal Meningitis	0	0	0

(continued next page)

Non/Bacterial Meningio Encephalitis	0	0	0
Lyme Disease	1	0	0
Lacrosse Encephalitis	1	1	0
Bacterial Meningitis	1	1	0
Viral Meningitis	0	2	1
Streptococcus Pneumoniae (Group A)	2	0	1
Streptococcus Pyogenes	1	0	0
Invasive Hemophilus Influenza	0	1	0
Dengue Fever	0	1	0
Strep Agal B	0	1	0
Strep Group B	0	1	0
Totals	52	105	63

THE WISCONSIN WELL WOMAN PROGRAM (WWWP)

2004 - # Contacts - 42

2005 - # Contacts - 57

2005 FARM SAFETY PROGRAM/LAFAYETTE COUNTY RURAL SAFETY DAY

(4TH AND 5TH GRADERS)

THE EVENT IS HELD EVERY OTHER YEAR

NOT HELD IN '05

SCHOOL HEALTH SERVICES

Total School Population - 3051

(6) District Contracts/Services

Total Revenue - \$ 39,615

MCH CHILD HEALTH GRANT

New Moms/Baby Contacts - 58

Revenue \$10,090

COP ASSESSMENTS

	<u>2003</u>	<u>2004</u>	<u>2005</u>
# Clients	40	42	37
Revenue	\$1950	\$1965	\$1350

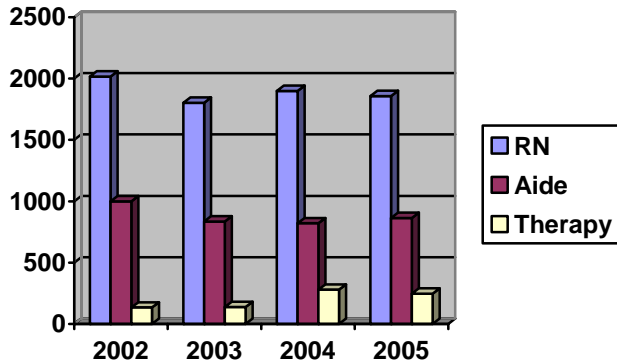
FOOT CARE

	<u>2003</u>	<u>2004</u>	<u>2005</u>
# Clients	279	316	324
Revenue	\$4464	\$5064	\$5843

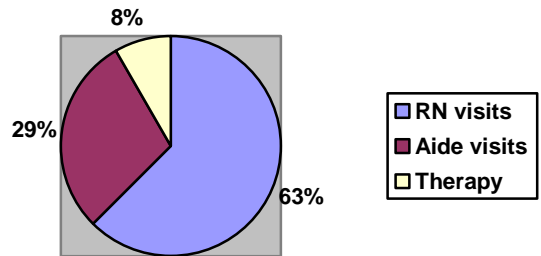
HOME CARE SERVICES

	<u>2002</u>	<u>2003</u>	<u>2004</u>	<u>2005</u>
Admissions	107	110	127	119
Discharges	109	112	118	127
Total Visits	3149	2776	3000	2968
RN Visit	2017	1803	1899	1857
Aide Visits	998	836	821	863
P.T. Visits	97	127	208	176
S.T. Visits	0	0	16	2
O.T. Visits	37	10	56	70

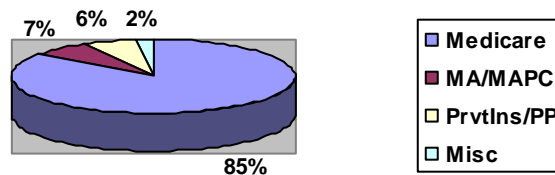
Home Care visits (per discipline)



Home Care Visit Type



HOME CARE REVENUE SOURCES 2005



Medicare	\$ 303,774	85%
Medical Assistance	19,159	05%
Private Insurance	18,227	05%
MA/PC	8,470	02%
Self Pay Patients	4,458	01%
Misc. Revenue	7,259	02%

MEDICAL ASSISTANCE PERSONAL CARE PROGRAM

	<u>2003</u>	<u>2004</u>	<u>2005</u>	
# Clients	40	30	31	2005 Revenue - \$ 19,159
RN Visits	196	182	199	2004 Revenue - 27,885
Aide Visits	390	457	558	2003 Revenue - 11,835

2005 County Home Care Allocation/Transfer	\$ 101,694
Home Care Program Revenues	361,347
Home Care Program Expenses	<u>430,319</u>
	32,722

COMMISSION ON AGING - PERSONAL CARE

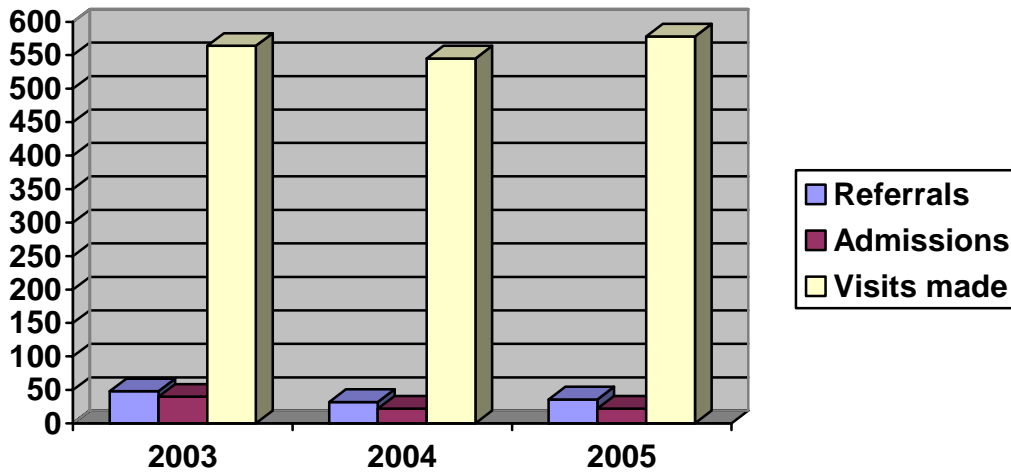
	<u>2003</u>	<u>2004</u>	<u>2005</u>		<u>2003</u>	<u>2004</u>	<u>2005</u>
# Clients	19	13	11	RN Visits	97	62	42
# Visit	679	474	343	Aide Visits	582	412	301
Program Cost -	\$11,938			Paid By Clients -	\$ 6,498		
				Paid by C.O.A. -	\$ 5,440		

COMMISSION ON AGING - HOUSEHOLD CHORE PROGRAM

	<u>2003</u>	<u>2004</u>	<u>2005</u>	
# Clients	79	69	62	
# Visits	2013	2160	1916	
Program Cost -	\$ 66,402			Paid by Clients - \$ 14,518
				Paid by COA - \$ 51,884

HOSPICE

	<u>2003</u>	<u>2004</u>	<u>2005</u>
Referrals for Hospice Care	48	32	36
Admitted to Hospice Program	35	22	22
RN/Aide/PT/OT/ST Visits	564	545	578
Meetings of Core Team	26	26	26

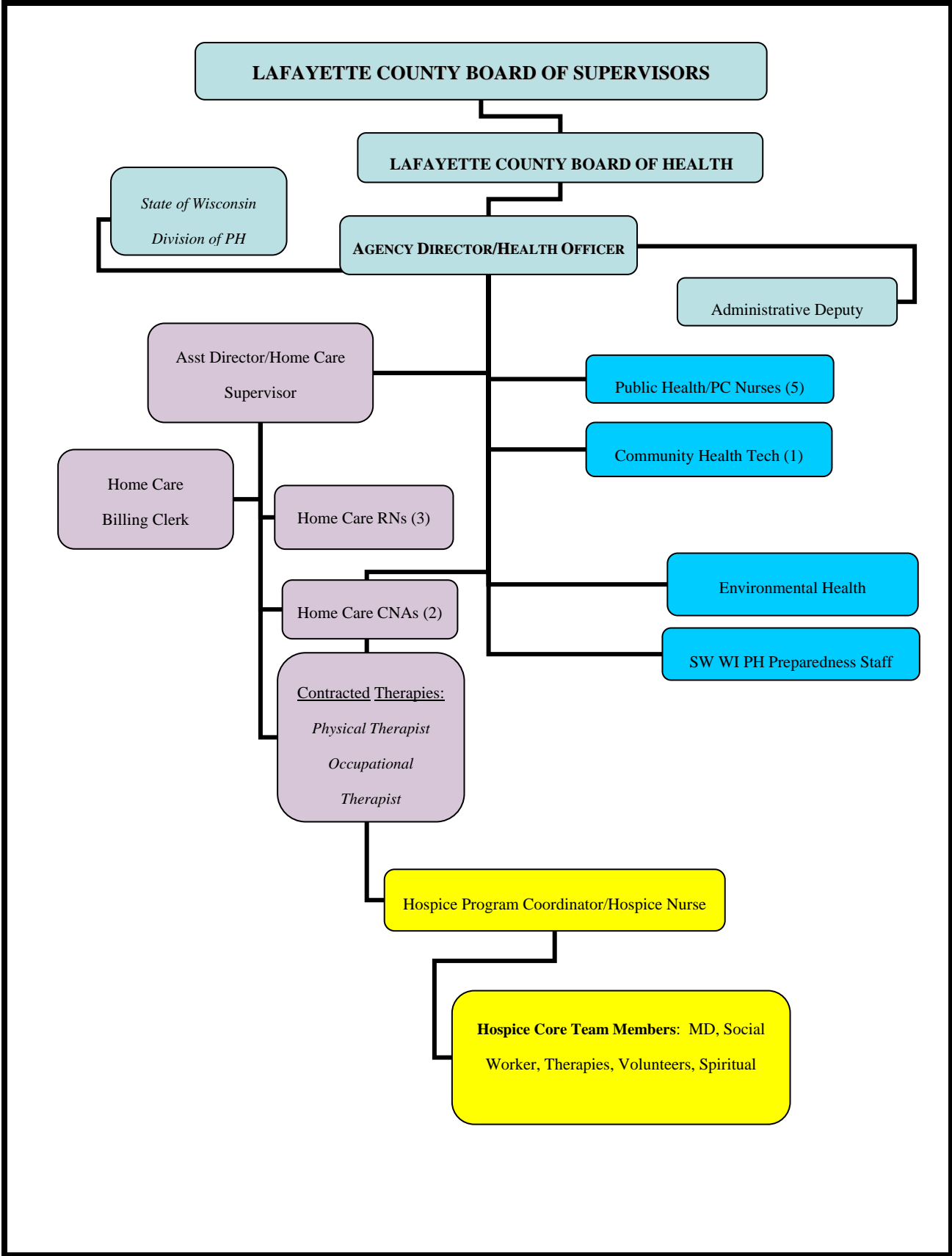


FISCAL PICTURE IN HOSPICE

	<u>2003</u>	<u>2004</u>	<u>2005</u>
Program Cost	\$176,737	\$156,002	\$207,599
Patient Care Reimbursement	\$203,294	\$146,739	\$232,506
Returned to General Fund			\$ 21,610
2005 Carry/Over			\$ 3,296

HOSPICE DONATION ACCOUNT - 2005

Donations	\$7,311
Expenses	<u>\$1,715</u>
C/O	\$5,596



2005 LAFAYETTE COUNTY HEALTH DEPARTMENT STAFF

DIRECTOR/HEALTH OFFICER

Debbie Siegenthaler RN, MSN

ASSISTANT DIRECTOR/HOME CARE SUPERVISOR

Jane O'Brien RN

ASSISTANT DIRECTOR/HOSPICE COORDINATOR

Kristie Lueck RN, BSN

PUBLIC HEALTH NURSING STAFF

Lee Gill RN

Farah Mellenberger RN, BSN

Sue Hefel RN, BSN

Lynn Howery RN, BSN

Mary Jo Finkenbinder RN (Personal Care Program)

HOME HEALTH AIDES

Leore Peterson, CNA

Teresa Robelia, CNA

Erin Hastert, CNA

HOME HELPER STAFF

Vicky Reichling

Trisha Rowe

Nancy Winslow

OFFICE STAFF

Jeri Byrne, Admin. Deputy

Janice Ruf, Home Care Billing Clerk/CNA

Cathy Paulson, Clerical/CNA/HH

Colleen Leinberger, PH Technician/Clerical/CNA

ENVIRONMENTAL HEALTH CONSULTANT

Troy Moris, Environmental Health Consultant

HOME CARE NURSING STAFF

Joanne Huntington RN

Sonja Wiegel RN

Mary Ellen Jacobson RN

OCCUPATIONAL THERAPIST

Barb Ritchie, Licensed OT

REGISTERED PHYSICAL THERAPIST

Susan Burke, Licensed PT

Marcy Christensen, Licensed PT

Jodi Christopher, Licensed PT

Melissa Nickels, PT aide

REGISTERED SPEECH THERAPIST

Michael Parks, Licensed ST

SOCIAL WORKER

Julie Shoemaker

REGISTERED DIETITIAN

Colleen Keen